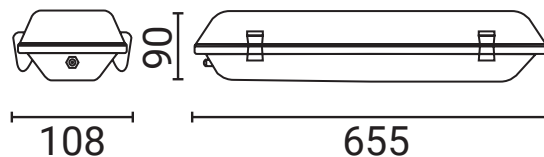




STAGNA ST1 - IK04 IP65

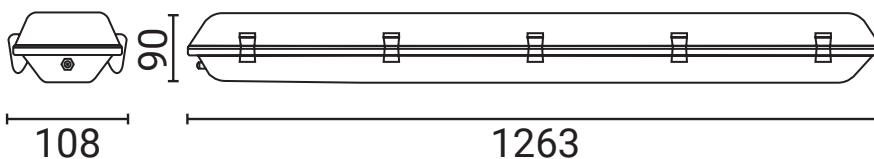
Apparecchio stagno per 2 tubi LED / Triproof lights for 2 LED tubes-single powered

S2T060L1



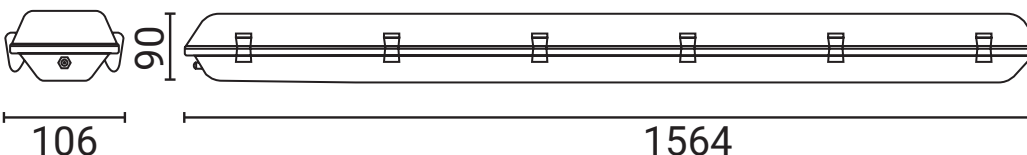
max 2X10W G13 220-240V 50/60Hz

S2T120L1

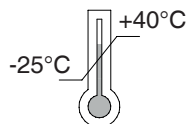


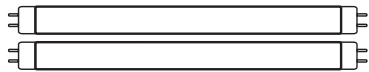
max 2X20W G13 220-240V 50/60Hz

S2T150L1



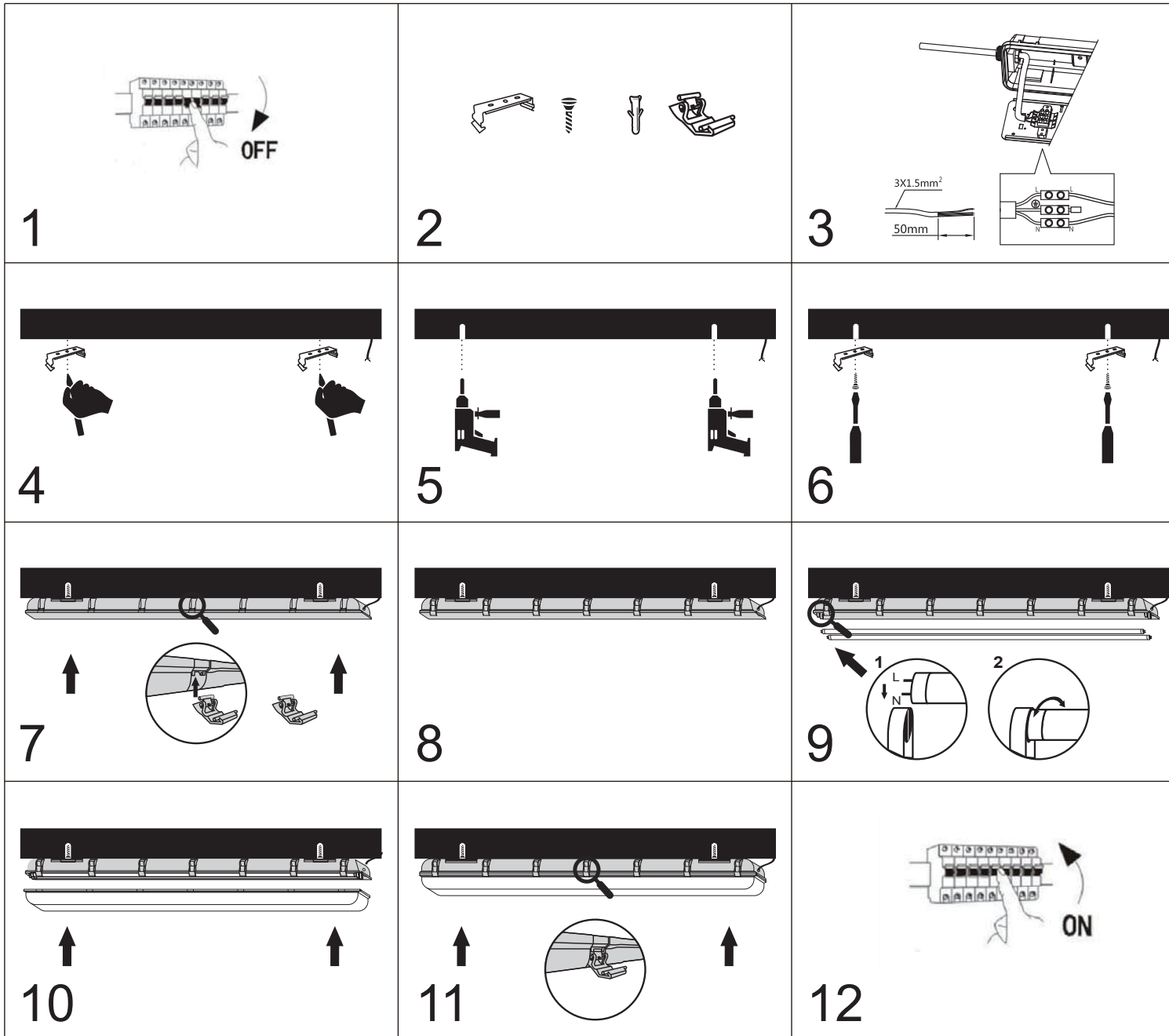
max 2X25W G13 220-240V 50/60Hz




2 X LED TUBE G13 NOT INCLUDED

UTILIZZARE SOLO TUBI LED
LED TUBES ONLY
SÓLO TUBOS LED
TUBES LED UNIQUEMENT
SOMENTE TUBOS LED
NUR LED-RÖHREN

VAIN LED PUTKILLE
VALAISIN EI SISÄLLÄ LED
PUTKIA



I - L'APPARECCHIO DEVE ESSERE INSTALLATO DA PERSONALE QUALIFICATO. L'AZIENDA DECLINA OGNI RESPONSABILITÀ QUALORA L'INSTALLAZIONE NON AVVENGA SECONDO LE NORME VIGENTI. LASCIARE UNA COPIA DI QUESTE ISTRUZIONI AL RESPONSABILE DELLA MANUTENZIONE. CONSERVARE L'ETICHETTA DELL'IMBALLO ORIGINALE PER EVENTUALI RECLAMI FUTURI

GB - THIS FIXTURE MUST BE INSTALLED BY A QUALIFIED ELECTRICIAN. DURALAMP IS NOT RESPONSIBLE IF ITS FIXTURES ARE NOT INSTALLED ACCORDING TO LOCAL SAFETY STANDARDS. PLEASE LEAVE A COPY OF THESE INSTRUCTIONS TO THE PERSON RESPONSIBLE FOR THE MAINTENANCE OF THE INSTALLATION. KEEP THE LABEL OF THE ORIGINAL PACKING FOR THE EVENTUAL FUTURE CLAIMS.

F - L'APPAREIL DOIT ETRE INSTALLE PAR ELECTRICIENS QUALIFIES. DURALAMP NE PEUT PAS ETRE RESPONSABLE POUR TOUTES INSTALLATIONS QUI NE RESPECTENT PAS LES NORMES DE SECURITE EN VIGUER. LAISSER UNE COPIE DE CES INSTRUCTIONS AU RESPONSABLE DE L'ENTRETIEN DU SYSTEME. GARDER L'ETIQUETTE DE L'EMBALLAGE ORIGINAL POUR EVENTUELLES RECLAMATIONS FUTURES.

D - DAS GERÄT MUSS VON ELEKTROINSTALLATEUREN MONTIERT WERDEN. DURALAMP IST NICHT VERANTWORTLICH WENN DIE MONTAGE NICHT GEMÄß DER SICHERHEITSVORSCHRIFTEN STATTFINDET. DIESES HINWEISBLATT MUß VOM INSTANDHALTUNGSLEITER AUFBEWAHRT WERDEN. BEI REKLAMATIONEN BITTE DEN ARTIKELAUFLIEBER AUS DER LEUCHTENVERPACKUNG BEIFÜGEN.

S - ARMATUREN MÅSTE INSTALLERAS AV GODKÄND ELEKTRIKER. DURALAMP KAN INTE PÅTAGES NÅGOT ANSVAR FÖR ATT PRODUKTEN INTE INSTALLERATS ENLIGT GÄLLANDE BESTÄMMELSER VÄNLIGEN ÖVERLÄMNA DESSA INSTRUKTIONER TILL ANSVARIG FÖR INSTALLATIONEN. BEHÅLL ORIGINALTIKETTEN PÅ FÖRPACKNINGEN FÖR EVENTUELLA REKLAMATIONER.

E - EL APARATO DEBE SER INSTALADO POR ELECTRICISTAS CUALIFICADOS. DURALAMP NO SE RESPONSABILIZARA DE TODAS LAS INSTALACIONES QUE NO RESPETEN LAS NORMAS DA SEGURIDAD EN VIGOR. ENTREGAR UNA COPIA DE ESTAS INSTRUCCIONES AL RESPONSABLE DE LA INSTALACION. CONSERVAR LA ETIQUETA DEL EMBALAJE ORIGINAL PARA POSIBLES RECLAMACIONES.

PT - O APARELHO DEVE SER INSTALADO POR ELECTRICISTAS QUALIFICADOS. DURALAMP NÃO PODE SER RESPONSABILIZADO POR TODAS AS INSTALAÇÕES QUE NÃO RESPEITEM AS NORMAS DE SEGURANÇA EM VIGOR. DEIXAR UMA CÓPIA DESTAS INSTRUÇÕES COM A PESSOA RESPONSÁVEL PELA MANUTENÇÃO. MANTER O RÓTULO DA EMBALAGEM ORIGINAL PARA EVENTUAIS FUTURAS RECLAMAÇÕES.

Valtuutetun sähköasentajan tulee asentaa valaisin. Valmistaja Duralamp ei ole vastuussa, jos valaisinta ei ole asennettu vallitsevien määräysten mukaisesti. Nämä asennusohjeet on oltava asentajan saatavilla asennusvaiheessa. Säilytä alkuperäinen pakkausetiketti sekä tiedot.